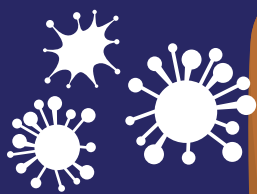


# COVID-19

## SYMPTOMS CAN INCLUDE

Patients that have experienced mild to severe respiratory illness.

**COUGH**

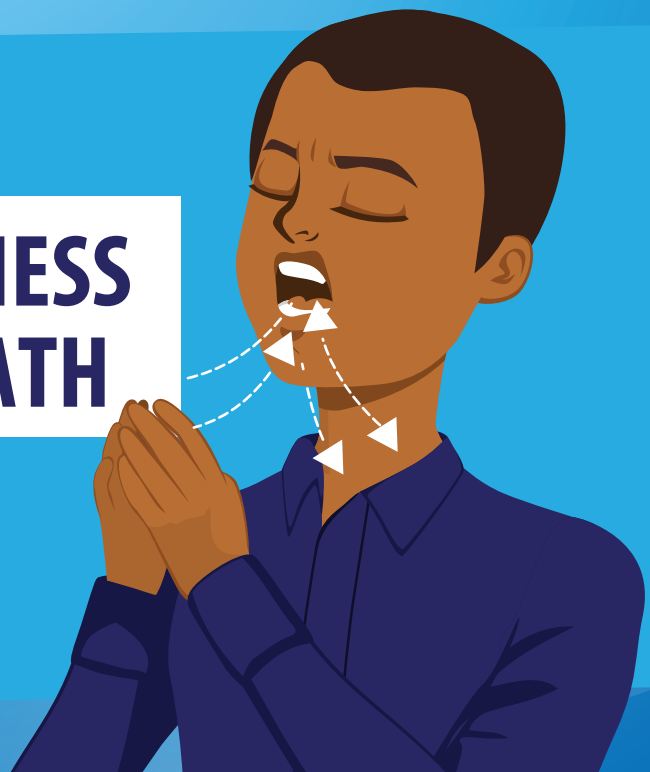


**FEVER**



\*Symptoms may appear 2-14 days after exposure.

**SHORTNESS OF BREATH**



Seek medical advice if you develop symptoms, and have been in close contact with a person known to have **COVID-19** or if you live in or have recently been in an area with ongoing spread of **COVID-19**.



**SADA**



[www.sada.co.za](http://www.sada.co.za)